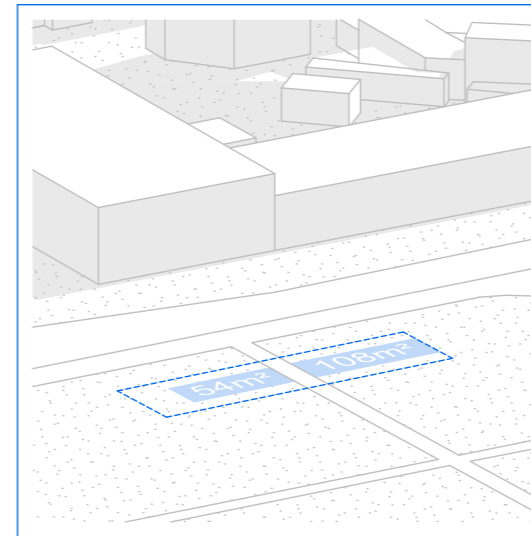
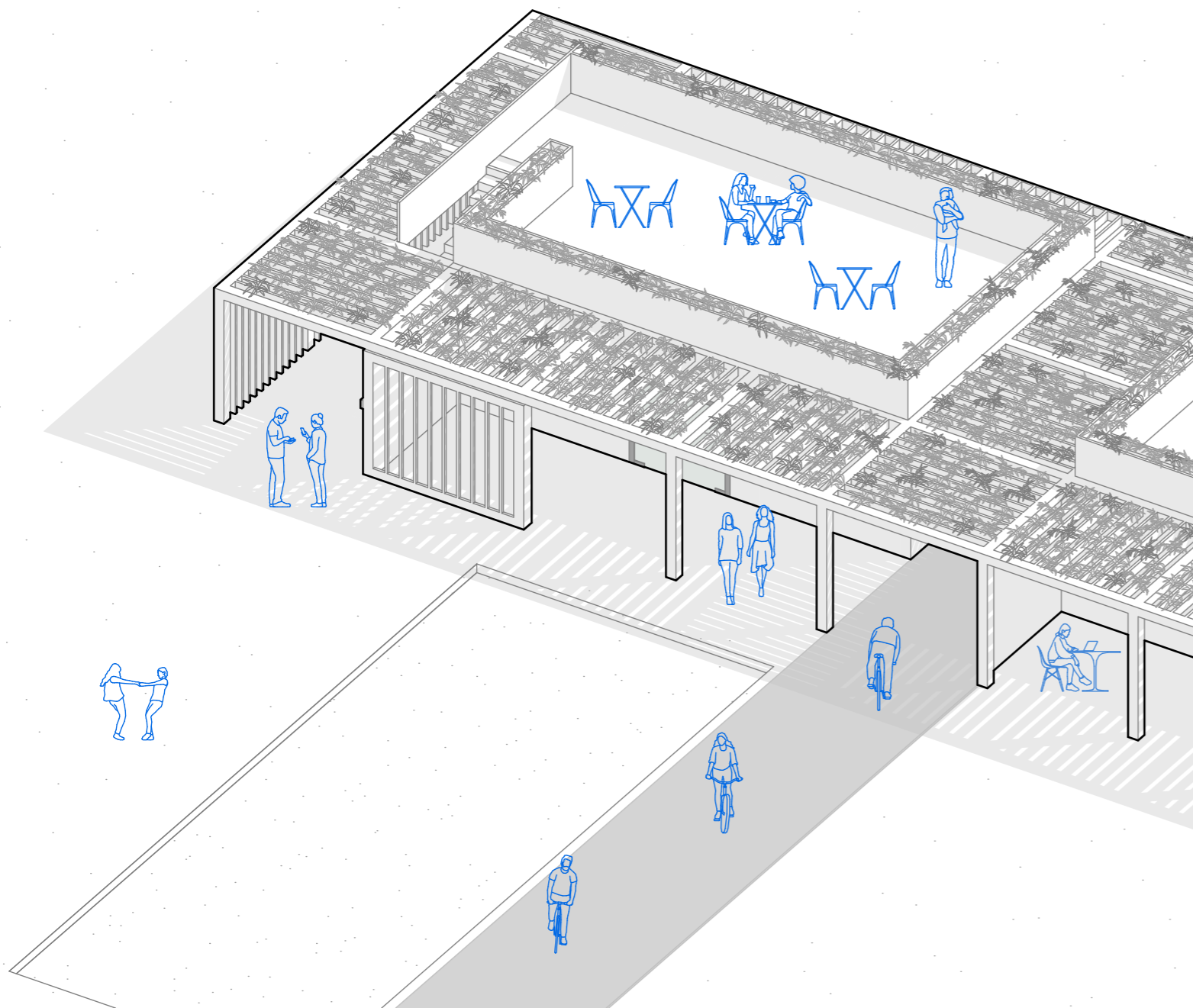


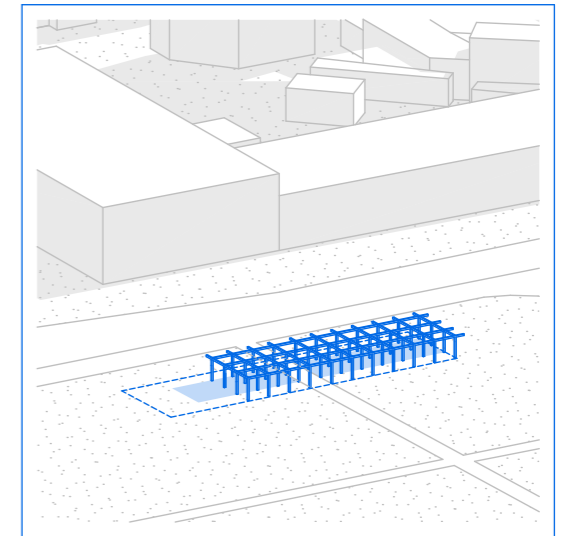
wandelBAR

Ein Quartiershaus für den „Grünen Bahnhof Plagwitz“

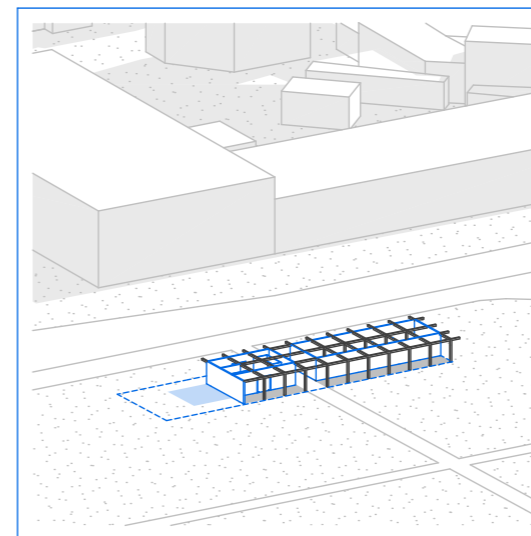
Luisa Sander & Sarah Härcher



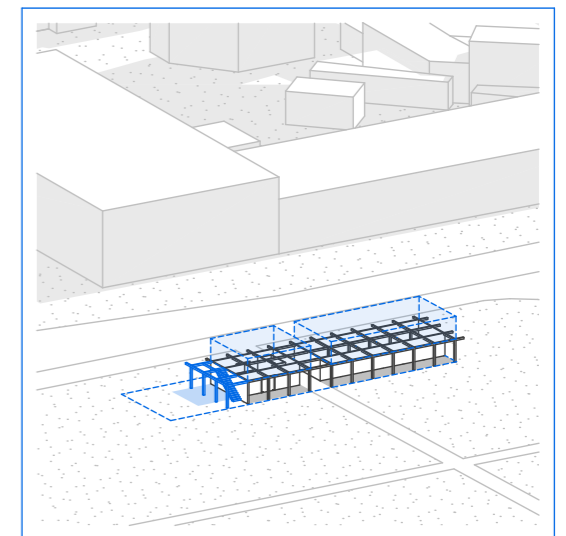
Verfügbare Fläche



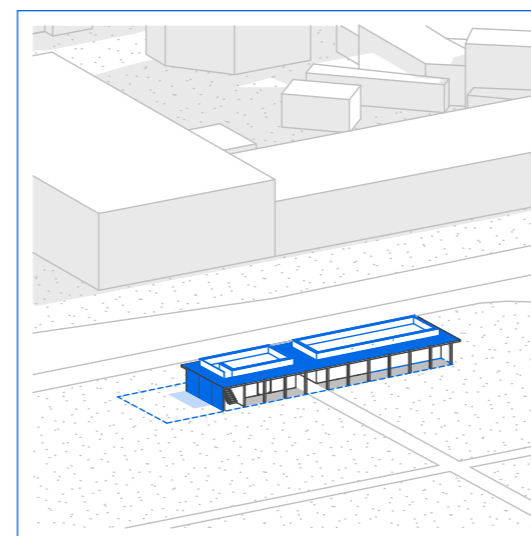
Flexibel und robust: Holzskelettbau



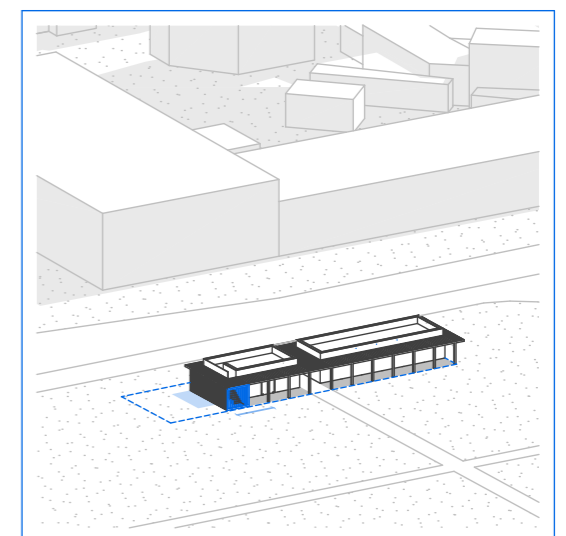
Wandelbar: Innen - Außen



Zugang zur Dachterrasse

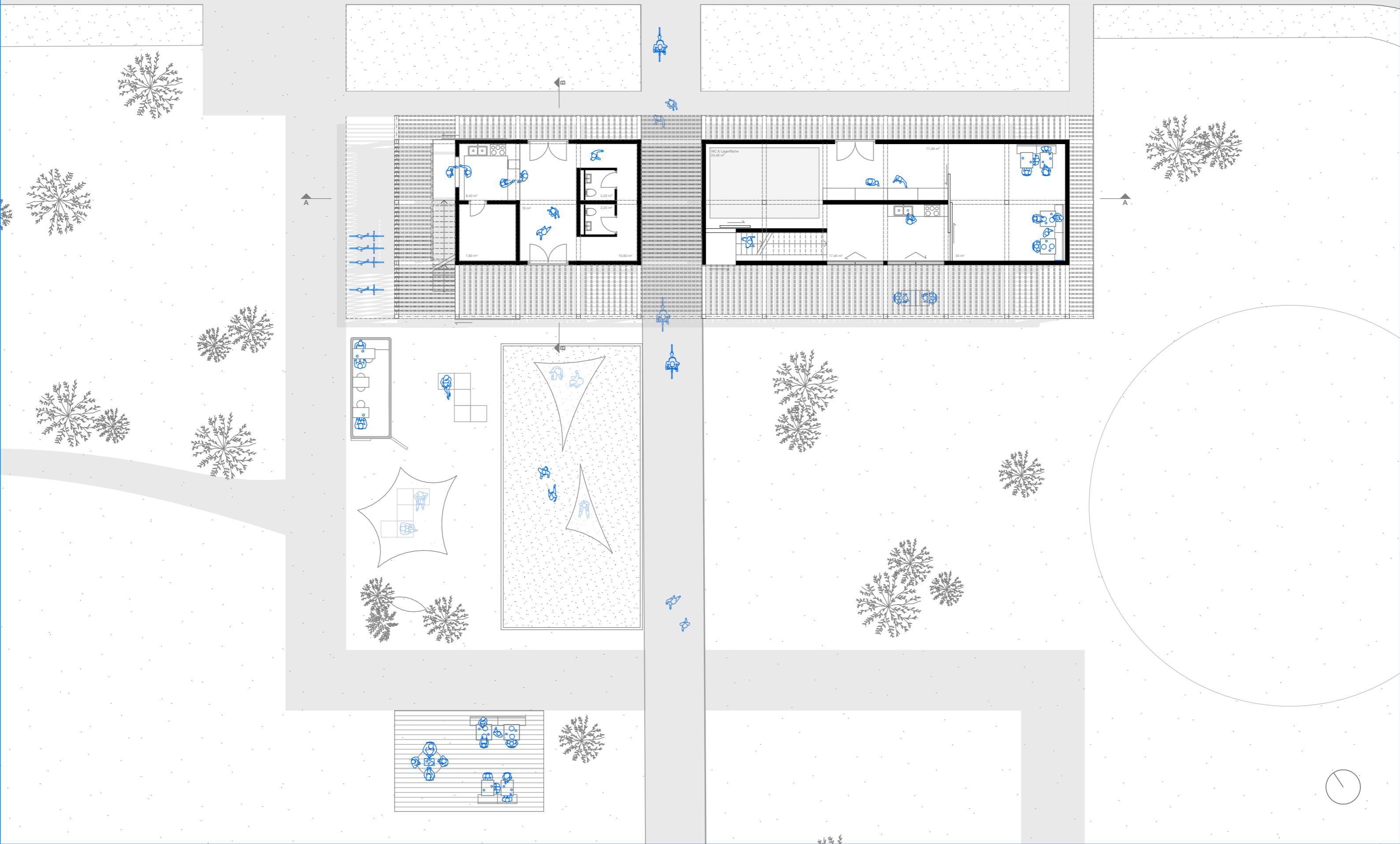


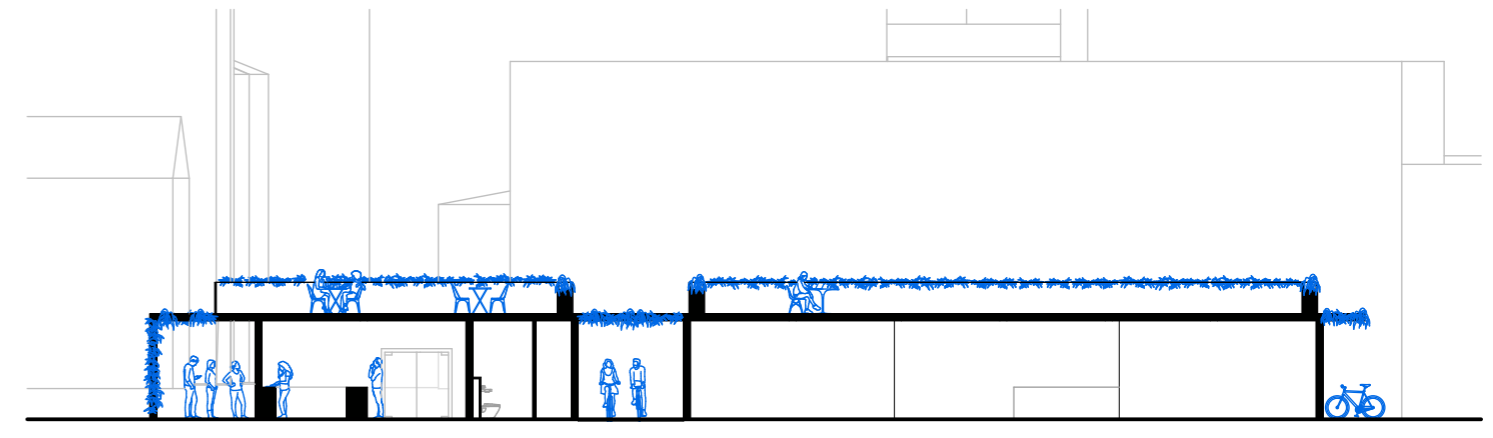
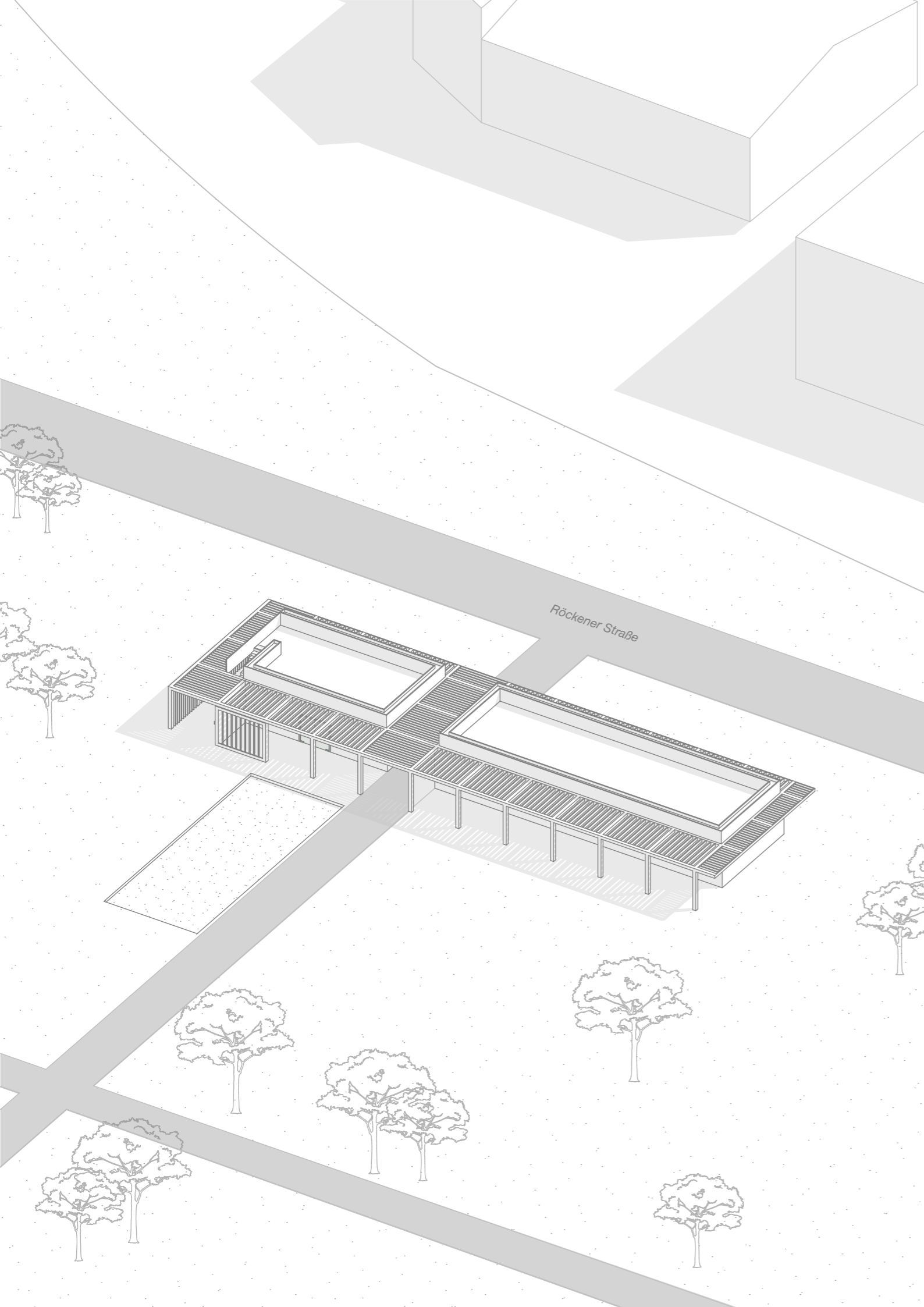
Mitwachsend: Dachbegrünung



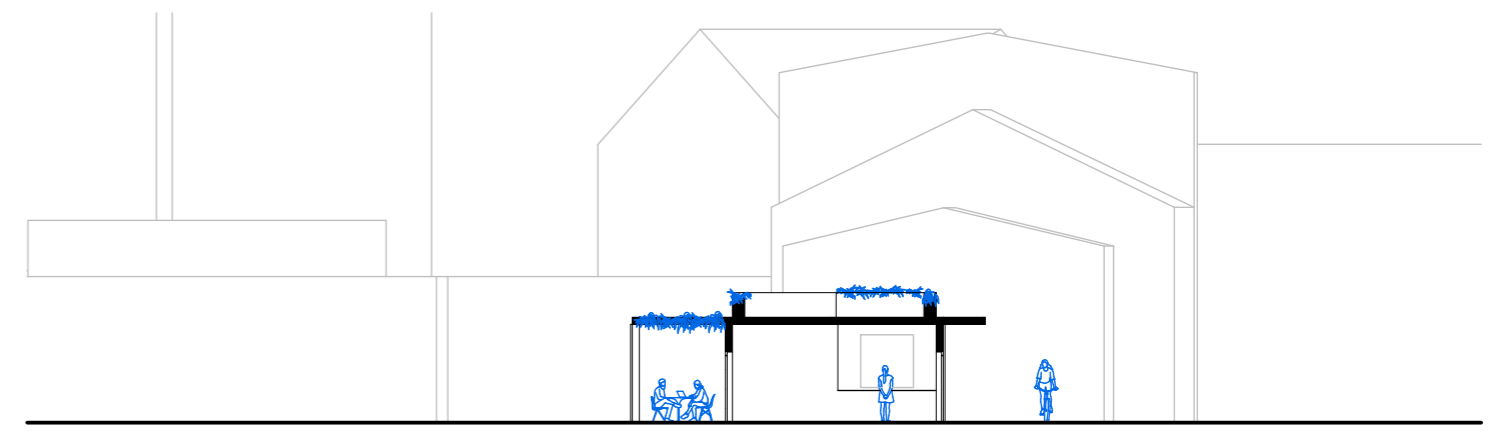
Abgeschlossenheit: Schiebetüren

Röckener Straße





Schnitt A-A



Schnitt B-B

